

BenQ

BenQ Smart Projectors for Business
**Share Your Ideas
Bigger and Smarter**

BenQ
Because it matters



Let us help innovate your business with effective cost-efficient productivity
Find us more: <https://www.benq.com/en-ap/business/index.html>

Dealer's Stamp

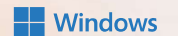
BenQ Corporation

16 Jihu Road, Neihu, Taipei 114, Taiwan
Tel : +886-2-2727-8899 Fax : +886-2-2656-2438

BenQ Asia Pacific Corp.

12 Jihu Road, Neihu, Taipei 114, Taiwan
Tel : +886-2-2727-8899 Fax : +886-2-2656-2438

© 2022 BenQ Asia Pacific Corp. Specification may vary by region, please visit your local stores for details.
Actual product's features and specifications are subject to change without notice.
This material may include corporate names and trademarks of third parties which are properties of the third parties respectively.



All-in-one Windows Projector for Enterprise



Laptop-like Interface

EH620 is BenQ's first Windows-based business smart projector which enables a laptop-like experience. It is an integration of intuitive interface, enterprise security, and system compatibility for hybrid meetings and online collaborations.

Access Cloud Resources from the Projector



Users can navigate on Edge or Chrome browser, manage files on OneDrive, chat on Skype, or access any cloud service directly on EH620. This effectively reduces meeting preparation time for business presentations.

Two Channel 5Wx2 Speakers



Designed for video conferences, EH620 offers two 5W speakers and a voice-enhanced Vocal Mode to let everyone, remote or in-person, hear clearly.



Join Video Conferences on Apps



Use online meeting apps like Google Meet, Skype for Business, or TeamViewer Meeting directly on the projector. No need to use a personal device for public use.

*More apps can be downloaded from Microsoft Store.

Driver-free Split Screen Casting



Share content from a 4-way split screen via Miracast, Airplay, Google Cast, or BenQ InstaShare wireless casting technology. It's easy to cast everyone's presentation slides from up to 4 devices simultaneously.



Hassle-free Setup

EH620 Windows Smart Projector can auto-detect the meeting environment to get the most suitable visual and audio settings.

- Auto Keystone
- Auto Picture/ Sound Modes

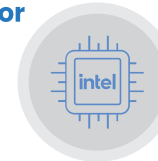


Wintel OS Offers Upgraded Info Security

Embedded Intel® Celeron® CPU enables comprehensive enterprise-grade security upgrades to provide complete protection over hardware, chips, apps, and wireless casting.

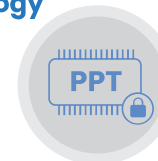
Intel® Celeron® Processor

Intel® Celeron® Processor 4205U boosts Windows application productivity up to 40% with faster connection and security of Intel Runtime BIOS Resilience.



Platform Trust Technology

Intel® PTT supports BitLocker for hard drive encryption and supports all Microsoft requirements for firmware Trusted Platform Module (fTPM) 2.0.



AES 128 & WPA2 Wi-Fi Security

AES 128-bit security encryption and the WPA2 authentication protocol ensure that any intellectual properties remain private and safe from tampering or unintended disclosure.



Windows Smart Projector



Model Name	EH620	
Smart System	OS System	Windows 11 Enterprise
	CPU	Whiskey Lake: Intel Celeron® 4205U
	ROM/RAM	64GB/4GB
Display	Projection System	DLP Single
	Native Resolution	1920 x 1080 pixels, 1080p
	Brightness	3400 ANSI Lumens
	Contrast Ratio*	10,000:1
	Display Color	30 Bits (1.07 billion colors)
	Aspect Ratio	Native 16:9 (5 aspect ratio selectable)
	Light Source	Lamp
Optical	Light Source Life*	Normal 4,000 hrs Economic 10,000 hrs SmartEco 15,000 hrs
	Throw Ratio	1.13- 1.47
	Zoom Ratio	1.3 x
	Keystone Correction	Auto ID, Vertical +/- 40 degrees
	Projection Offset	105%
Audio	Projection Size	40" - 200"
	Built-in Speaker	5Wx2
Security	Security	Security Bar, Kensington Lock
Connectivity	I/O Port	HDMI x2 USB-1 TypeA (1.5A power/Reader) x1 USB-2 TypeA (1.0A power/Reader) x1 USB-3 TypeA (1.0A power/Reader) x1 USB-4 TypeA (0.9A power) x1 USB Type min B (For FW upgrade) x1 Computer In (D-sub 15pin, Female) x1 Monitor out (D-sub 15pin, Female) x1 RS232 In (D-sub 9pin, male) x1 LAN (RJ45) (Control & FW Upgrade) x1 Audio in (mini jack) x1 Audio out (mini jack) x1 IR Receiver (Front+Top) x2
	Wireless	Wireless IEEE 802.11a,b,g,n,ac,2,4G/5G Bluetooth V4.2+HS
Power	Power Consumption	Max 350W, Normal 340W, Eco 280W
	Standby Power consumption	Normal < 0.5W
	Power Supply	100 - 240V AC
Physical	Product Dimensions (WxHxD)	380 x 127 x 263 mm
	Product Weight	4.2 Kg
	Noise Level (Normal/Eco)	32 / 28 dBA
Accessories	Accessories (Standard)	Wireless dongle: WDRO2U Power Cord (by region) Remote Control w/ Battery VGA cable Warranty card (by region)
	OSD	On Screen Display Language Arabic/Bulgarian/ Croatian/ Czech/ Danish/ Dutch/ English/ Finnish/ French/ German/ Greek/ Hindi/ Hungarian/ Italian/ Indonesian/ Japanese/ Korean/ Norwegian/ Polish/ Portuguese/ Romanian/ Russian/ Simplified Chinese/Spanish/ Swedish/ Turkish/ Thai/ Traditional Chinese/ Vietnamese/ Farsi (30 Languages)

Environment Notice

*The Contrast is measure by Full On Full Off standard.

*LightSource Life results will vary depending on environmental conditions and usage. Actual product's features and specifications are subject to change without notice.

*Storage: Temperature: -20-60°C; Humidity: 10-90%RH (without condensation).

*Transmission quality depends on Wi-Fi environment and the screen mirroring compatibility of mobile devices from different brands.

Take the Lead from the Start

BenQ Smart Projectors for Business



Android Smart Projector for Business

Projecting the future – Elevate Your Agile Team with Smart Projectors

Seamless Meetings with Business Apps in Your Hand

With the built-in smart, user-friendly Android OS, BenQ Android Smart Projectors facilitate your meetings with the inclusion of useful business apps. Get connected at just one click.

- Start a video conference with TeamViewer Meeting.
- Create documents collaboratively via WPS Office.
- Search for inspiration on the Firefox browser.
- Use X-Sign Broadcast to push text, image or video links via the Smart Projector on a big screen.
- Remotely access another computer to view files or troubleshoot via TeamViewer.



Navigate Your Projector with BenQ Smart Control

BenQ Smart Control turns your smartphone into a remote control, a mouse pad and a keyboard to navigate the Smart Projector's business apps.



Bluetooth for Easy Wireless Connections

Whether it's for audio speakers or headsets, Bluetooth connection will upgrade your experience and leave the nest of wires behind.



Hassle Free for IT Manager

AMS (Account Management System) makes it easy to manage all accounts on the Android-based Smart Projectors. Users can log in to their AMS account to manage the files and personalized settings.

DMS (Device Management Solution) enables remote and centralised management of Smart Projectors. It's simple to remotely monitor, control and configure projectors individually or as a group at once.

OTA (Over-the-Air) support allows users to upgrade the latest firmware for your Smart Projector.



Standard Throw EH600/ EW600/ EX600



- Wireless projection for instant mirroring
- Internet connectivity for business app enablement
- Direct USB reader – completely PC free

Short Throw EW800ST/ EX800ST



Wireless Presentation

Wireless Mirroring Across Multiple Platforms

Simply bring your smartphone, tablet, or laptop for instant wireless projection. Eliminate cable clutter and facilitate immediate collaboration to improve teamwork and productivities.



Direct Wi-Fi Hotspot

Even in a Wifi-less environment, the hotspot of BenQ Smart Projectors allows users to wirelessly cast the screen from their mobile device.



USB Direct Reader

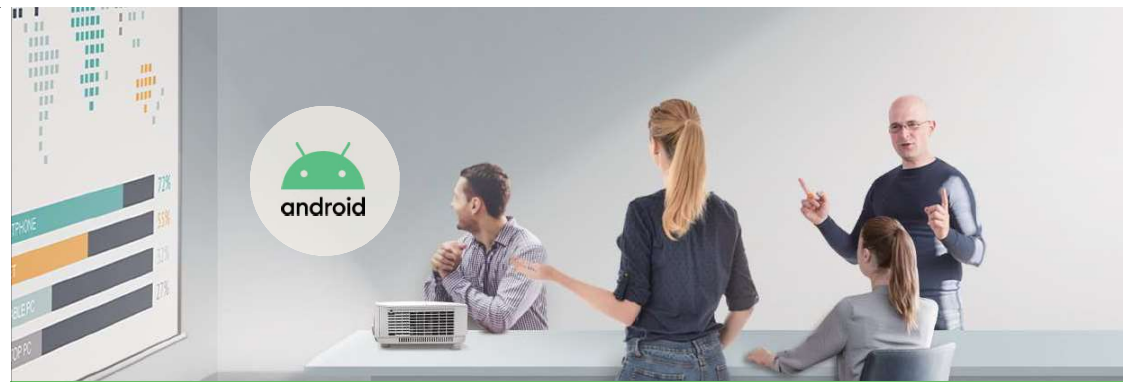
Be Organised, Nimble with Just a USB

The USB Type-A port supports a wide range of file formats including JPEG, PDF, Microsoft Word, Excel and PowerPoint files, allowing you to easily project images or documents directly onto the screen without the need of a PC.

Completely PC Free

Eliminate the trouble of dragging along a computer. Complete your presentation with a USB drive that fits in your pocket, or simply use a portable hard drive.



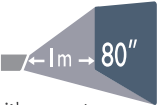


Short Throw Smart Projectors

Smarter Space for Efficient Meetings



One Step Away from the Screen



With a 0.61 short-throw ratio, it's easy to project an 80-inch image from 1 meter away.

Stand in Front and Leave More Space



Save more space for your audience. Talk with your hands without fear of blocking your presentation.

Anti-dust Accumulation Sensor

Reject large amount of dust accumulation. Enhance device durability and reduce maintenance costs.

Wall Color Correction

Smart Projectors can correct the projected picture's color when the projection surface is not white. It will prevent the possible color difference between the source and projected pictures.

16GB Storage

With a generous 16GB internal memory, users can install and utilize business applications to facilitate communications and collaboration.

Details that Make a Difference

Adjustable Feet for Convenient Setup

Two adjustment feet, including a retractable adjustment foot, significantly enhance flexibility for projector setup and mobility in various types of meeting rooms.



Android Smart Projector



Model Name		EH600	EW600	EX600	EW800ST	EX800ST
Smart System	OS System	Android 6.0	Android 6.0	Android 6.0	Android 6.0	Android 6.0
	CPU	ARM A53 4 Core (1.5GHz)	ARM A53 4 Core (1.5GHz)	ARM A53 4 Core (1.5GHz)	ARM A53 4 Core (1.5GHz)	ARM A53 4 Core (1.5GHz)
	ROM/RAM	16GB/2GB	16GB/2GB	16GB/2GB	16GB/2GB	16GB/2GB
Display	Projection System	Single DLP	DLP Single	DLP Single	DLP Single	DLP Single
	Native Resolution	1920 x 1080 pixels, 1080p	1280 x 800 pixels, WXGA	1280 x 800 pixels, WXGA	1280 x 800 pixels, WXGA	1024 x 768 pixels, XGA
	Brightness	3,500 ANSI Lumens	3,600 ANSI Lumens	3,600 ANSI Lumens	3,300 ANSI Lumens	3,300 ANSI Lumens
	Contrast Ratio*	10,000:1	20,000:1	20,000:1	20,000:1	20,000:1
	Display Color	30 Bits (1.07 billion colors)	30 Bits (1.07 billion colors)	30 Bits (1.07 billion colors)	30 Bits (1.07 billion colors)	30 Bits (1.07 billion colors)
	Aspect Ratio	Native 16:9 (5 aspect ratio selectable)	Native 16:10 (5 aspect ratio selectable)	Native 4:3 (5 aspect ratio selectable)	Native 16:10 (5 aspect ratio selectable)	Native 4:3 (5 aspect ratio selectable)
	Light Source	Lamp	Lamp	Lamp	Lamp	Lamp
Optical	Light Source Life*	Normal 5,000 hrs Economic 10,000 hrs SmartEco 15,000 hrs LampSave 15,000 hrs	Normal 5,000 hrs Economic 10,000 hrs SmartEco 15,000 hrs LampSave 15,000 hrs	Normal 5,000 hrs Economic 10,000 hrs SmartEco 15,000 hrs LampSave 15,000 hrs	Normal 5,000 hrs Economic 10,000 hrs SmartEco 15,000 hrs LampSave 15,000 hrs	Normal 5,000 hrs Economic 10,000 hrs SmartEco 15,000 hrs LampSave 15,000 hrs
	Throw Ratio	1.49~1.64	1.55~1.7	1.96~2.15	0.49	0.61
	Zoom Ratio	1:1 x	1:1 x	1:1 x	Fixed	Fixed
	Keystone Correction	1D, Vertical +/- 40 degrees	1D, Vertical +/- 40 degrees	1D, Vertical +/- 40 degrees	1D, Vertical ± 30 degrees	1D, Vertical ± 30 degrees
Audio	Projection Offset	108±2.5% (Full-Height)	100±2.5% (Full-Height)	110±2.5% (Full-Height)	105±2.5% (Full-Height)	115±2.5% (Full-Height)
	Projection Size	60"~180"	60"~180"	60"~180"	70"~120"	60"~120"
Security	Built-in Speaker	2W x1	2W x1	2W x1	2W x1	2W x1
	Security	Security Bar	Security Bar	Security Bar, Kensington lock	Security Bar, Kensington lock	Security Bar, Kensington lock
Connectivity	I/O Port	HDMI x1 PC (D-sub 15pin) x1 Monitor out (D-sub 15pin, Female) x1 Audio in (mini jack) x1 Audio out (mini jack) x1 RS232 In (D-sub 9pin, male) x1 USB Type A-1 x1 USB Type A-2 (5V,1.5A) x1 USB Type A (For hidden wireless dongle) x1 USB Type mini B x1 IR Receiver (Front+Top) x2	HDMI x1 PC (D-sub 15pin) x1 Monitor out (D-sub 15pin, Female) x1 Audio in (mini jack) x1 Audio out (mini jack) x1 RS232 In (D-sub 9pin, male) x1 USB Type A-1 x1 USB Type A-2 (5V,1.5A) x1 USB Type A (For hidden wireless dongle) x1 USB Type mini B x1 IR Receiver (Front+Top) x2	HDMI x1 PC (D-sub 15pin) x1 Monitor out (D-sub 15pin, Female) x1 Audio in (mini jack) x1 Audio out (mini jack) x1 RS232 In (D-sub 9pin, male) x1 USB Type A-1 x1 USB Type A-2 (5V,1.5A) x1 USB Type A (For hidden wireless dongle) x1 USB Type mini B x1 IR Receiver (Front+Top) x2	HDMI x1 PC (D-sub 15pin) x1 Monitor out (D-sub 15pin, Female) x1 Audio in (mini jack) x1 Audio out (mini jack) x1 RS232 In (D-sub 9pin, male) x1 LAN Port (RJ45 for Network) x1 USB Type A-1 x1 USB Type A-2 (5V,1.5A) x1 USB Type mini B x1 IR Receiver (Front+Top) x2	HDMI x1 PC (D-sub 15pin) x1 Monitor out (D-sub 15pin, Female) x1 Audio in (mini jack) x1 Audio out (mini jack) x1 RS232 In (D-sub 9pin, male) x1 LAN Port (RJ45 for Network) x1 USB Type A-1 x1 USB Type A-2 (5V,1.5A) x1 USB Type mini B x1 IR Receiver (Front+Top) x2
	Wireless	Wireless	Dual Band 802.11ac/b/g/n, 2.4G/5G	Dual Band 802.11ac/b/g/n, 2.4G/5G	Dual Band 802.11ac/b/g/n, 2.4G/5G	Dual Band 802.11ac/b/g/n, 2.4G/5G
Power	Bluetooth	4.0	4.0	4.0	4.0	4.0
	Power Consumptions	Max 320W, Normal 280W, Eco 235W	Max 320W, Normal 280W, Eco 235W	Max 320W, Normal 280W, Eco 235W	Max 320W, Normal 280W, Eco 235W	Max 320W, Normal 280W, Eco 235W
	Standby Power consumption	Normal < 0.5W	Normal < 0.5W	Normal < 0.5W	Normal < 0.5W, Network < 2W	Normal < 0.5W, Network < 2W
Physical	Power Supply	100 ~ 240V AC	100 ~ 240V AC	100 ~ 240V AC	100 ~ 240V AC	100 ~ 240V AC
	Product Dimensions (WxHxD)	296 x 120 x 232 mm	296 x 120 x 232 mm	296 x 120 x 232 mm	296 x 120 x 250 mm	296 x 120 x 250 mm
	Product Weight	2.5 Kg	2.5 Kg	2.5 Kg	2.6 Kg	2.6 Kg
Accessories	Noise Level (Normal/Eco)	33/29 dBA	33/29 dBA	33/29 dBA	33/29 dBA	33/29 dBA
	Accessories (Standard)	Wireless Dongle: WDR02U Power Cord (by region) Remote Control w/ Battery VGA cable Warranty Card (by region)	Wireless Dongle: WDR02U Power Cord (by region) Remote Control w/ Battery VGA cable Warranty Card (by region)	Wireless Dongle: WDR02U Power Cord (by region) Remote Control w/ Battery VGA cable Warranty Card (by region)	Wireless Dongle: WDR02U Power Cord (by region) Remote Control w/ Battery VGA cable Warranty Card (by region)	Wireless Dongle: WDR02U Power Cord (by region) Remote Control w/ Battery VGA cable Warranty Card (by region)
OSD	On Screen Display Language	Arabic/Bulgarian/ Croatian/ Czech/ Danish/ Dutch/ English/ Finnish/ French/ German/ Greek/ Hindi/ Hungarian/ Italian/ Indonesian/ Japanese/ Korean/ Norwegian/ Polish/ Portuguese/ Romanian/ Russian/ Simplified Chinese/Spanish/ Swedish/ Turkish/ Thai/ Traditional Chinese/Vietnamese/ Farsi (30 Languages)				

Environment Notice
 *The Contrast is measure by Full On Full Off standard.
 *LightSource life results will vary depending on environmental conditions and usage. Actual product's features and specifications are subject to change without notice.
 *Storage: Temperature: +20-80°C; Humidity: 10-90%RH (without condensation)
 *Transmission quality depends on Wi-Fi environment and the screen mirroring compatibility of mobile devices from different brands.